



Manchester Secondary PRU Curriculum Booklet 2023-24

New Beginnings, Positive Futures



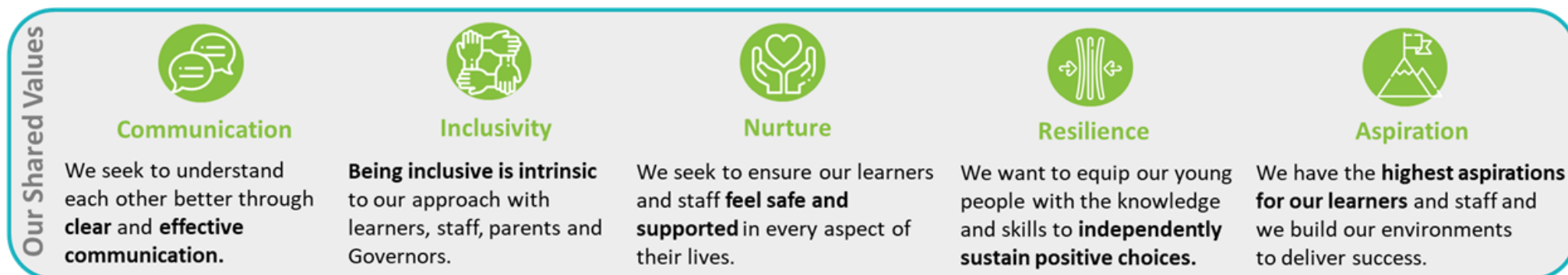
Curriculum Aims

Our curriculum aims to provide our learners with educational success and to prepare them for the next stage in their lives. We know our pupils well and have designed a curriculum which promotes their personal growth and academic achievement.

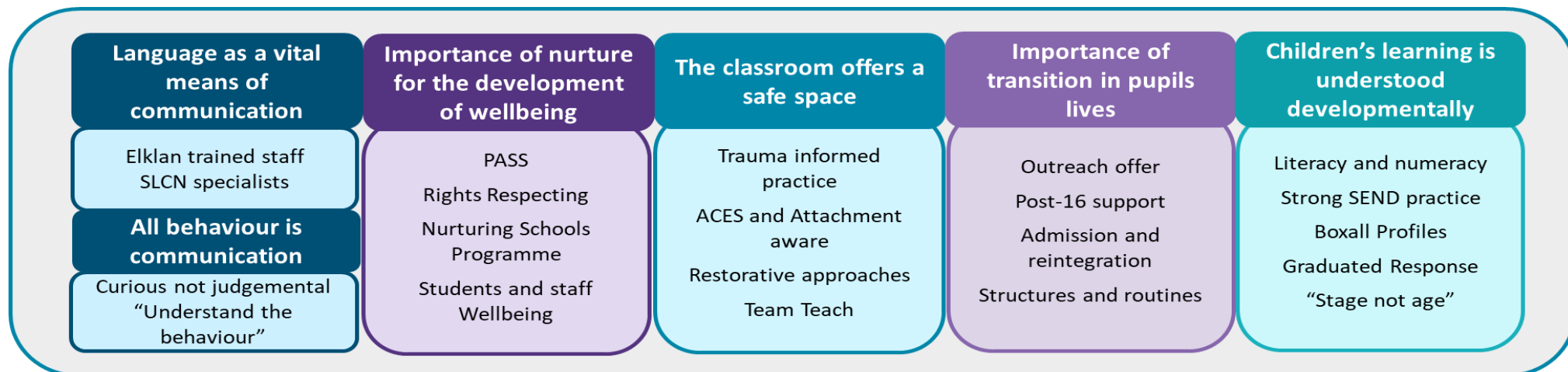
Curriculum Overview

Manchester Secondary PRU provides education and emotional support to children from Year 7 to Year 11, We offer a broad and ambitious curriculum which supports them to identify and overcome their barriers to learning and build confidence and self-esteem.

Our curriculum is based on our shared values:



and is guided by the 6 Principles of Nurture



Curriculum Intent

Our curriculum aims to provide our learners with educational success and to prepare them for the next stage in their lives. It has been designed with the following:

Curriculum Principles - We will provide a curriculum which:

- Is **high quality and ambitious for all**, giving students access to a broad range of academic and vocational subjects as well as fostering creativity
- Is based on the National Curriculum but is **adapted at a whole-school and subject level** to ensure we can meet the needs of our learners
- Has a strong focus on **personal and social development**
- Is **inclusive**, setting high expectations of all learners
- Provides all students with the opportunity to develop the essential **skills for life**
- Ensures **progression** is an integral part of the curriculum design

Definition of Learning - Learning is a persistent change in knowledge. At MSPRU we understand learning as both a process and a product:

We refer to learning as something we do, as well as something we end up with. We define the **process of learning as thinking** and the **product of learning as knowledge**.

Intent - The curriculum we provide will allow our students to **know more, remember more and do more**. They will learn:

- a broad range of **powerful knowledge** in key national curriculum subjects
- how to **read, write and communicate** confidently
- about the principles of **fluency in mathematics**
- how to be **critical thinkers**
- to **respect and celebrate** individuality and diversity
- how to be **resilient** in the face of adversity and challenge
- how to **understand and manage** their emotions
- how to **recognise risks** and identify benefit and harm
- about different **career pathways** and the skills and knowledge required to be successful
- about the **culturally rich communities** in which they live

Curriculum Rationale

At Manchester Secondary PRU we place the curriculum at the heart of our school. Growing out from our shared vision and values, under-pinned by the 6 Principles of Nurture and with the Manchester Skills for Life framework running through all aspects, our curriculum forms a cohesive whole. It has been constructed with a strong focus on a core set of National Curriculum subjects alongside structured support for our students' Personal Development.

We aim to develop a clear understanding of our learners' needs at the point of referral and throughout their time with us. Many are referred to us with undiagnosed SEND, some have had their education disrupted due to adverse childhood experiences and others may be referred for a serious one-off incident. As a result, our curriculum needs to be:

- Highly ambitious for all learners
- Delivered through high quality teaching
- Adapted to meet the needs of our learners

Our curriculum has been designed to give all students access to the same, high quality curriculum content. For learners who have difficulty, our approach is not to alter the curriculum content but, rather, adapt our approach to teaching and pupil-support to ensure the learners can access the curriculum at an appropriate level. To achieve this our curriculum is structured into specific targeted pathways which allow us to provide a highly personalised programme for our students.



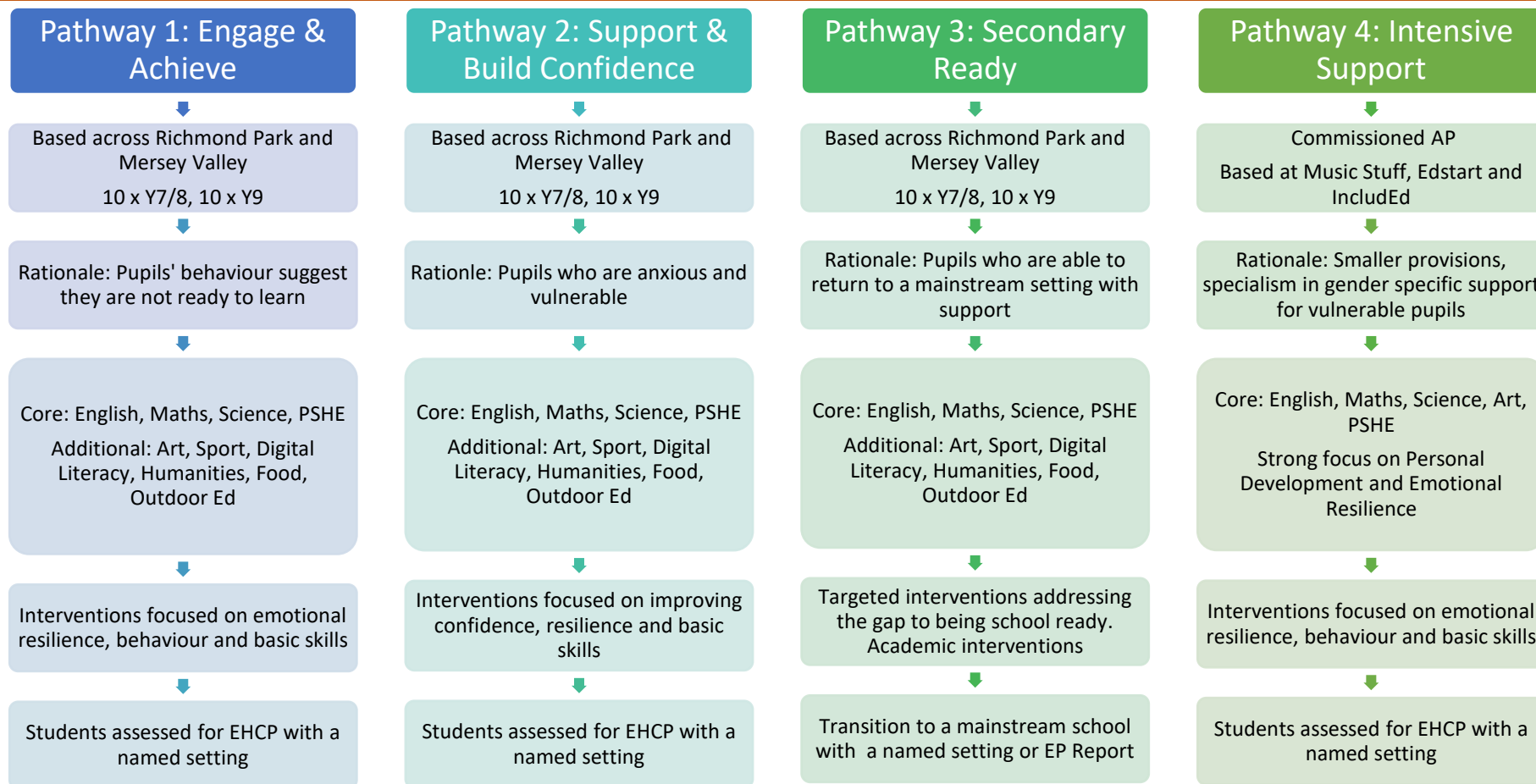
Key Stage 3 – Curriculum Pathways

Curriculum Structure

Our Key Stage 3 curriculum is divided into 3 discrete pathways. Initial allocation to a particular pathway will be determined using information provided at referral and information gathered through assessments undertaken as part of a planned induction process. Over the course of a placement, pupils may move between pathways.

Induction

SEND – Undertake a priority needs assessment



All students will study a core curriculum which consists of English, Maths, Science and PSHE

Pathway 1 and 2: Engage & Achieve and Support & Build Confidence pathways

- delivered in discrete lessons via teaching and learning approaches based on the EEF Special Educational Needs in Mainstream Schools
 - positive and supportive environment
 - built on our understanding of individual pupil's needs (Induction and SEND baseline assessments)
 - teaching strategies which focus on scaffolding, chunking and explicit instruction
 - delivered in small class sizes with 1-2-1 interventions if and when required
 - a minimum of one learning mentor to supplement the work of the teacher
- strong focus on experiential learning; all students will have regular access to Outdoor Ed
- staff trained to provide targeted interventions depending on the pathway – ELSA, ELKLAN, precision teaching, literacy interventions
- students will be assessed for SEND – Cognition and Learning or SEMH

Pathway 3: Return to mainstream

- delivered in discrete lessons via teaching and learning approaches based on the EEF Special Educational Needs in Mainstream Schools
 - positive and supportive environment
 - built on our understanding of individual pupil's needs (Induction and SEND baseline assessments)
 - teaching strategies which focus on scaffolding, chunking and explicit instruction
 - delivered in small class sizes with 1-2-1 interventions if and when required
 - a minimum of one learning mentor to supplement the work of the teacher
- additional opportunities to focus on National Curriculum subjects to maintain parity with mainstream peers
- students likely to have been excluded for significant, one-off reason
- undertake a Mainstream Readiness assessment, with subsequent interventions to specifically target the reason for exclusion

Pathway 4: Commissioned AP - Intensive Support

- delivered via discrete, subject-based lessons
- a range of academic subjects delivered by subject specialists
- smaller settings, each commissioned provider has experience in providing intensive emotional support
- broad range of academic and behavioural interventions

Key Stage 4 – Curriculum Pathways

Curriculum Structure

Our Key Stage 4 curriculum is divided into 4 pathways. Our Core pathway is delivered in MSPRU Centres and commissioned AP Centres. Initial allocation to a particular pathway will be determined using information provided at referral and information gathered through assessments undertaken as part of a planned induction process. Over the course of a placement, pupils may move between pathways.

Induction

SEND – Undertake a priority needs assessment

Pathway 1: MSPRU Core

Based at Mersey Valley, Clayton, Newton Heath and Procter
50 x Y10, 50 x Y11

Rationale: 2-year KS4 providing up to 7 GCSEs. Access to FS/Entry Level. Vocational option available via the Manchester AP framework.

Core: English, Maths, Science, Art and Personal Development
Supplimentary: Sport, Vocational Experiences Carousel
Additional: Two accredited courses

Targeted interventions addressing the reason for referral + academic interventions

Formal assessment of SEND
Transition to post-16 education, employment or training

Pathway 2: AP Core

Commissioned AP from the Manchester AP Framework - Edstart for 2023/4

Rationale: 2-year KS4 providing both, access to Lev 2 threshold and FS/Entry Level when appropriate

Core: English, Maths, Science, and Personal Development
Additional: Two accredited courses

Targeted interventions addressing the reason for referral + academic interventions

Formal assessment of SEND
Transition to post-16 education, employment or training

Pathway 3: College

Based at The Manchester College
30 x Year 11 only

Rationale: Intensive 1-year GCSE course. Access to FS/Entry Level when appropriate

Core: English, Maths, Science, Art and Personal Development
Supplimentary: Sport
Additional: Two accredited courses

Targeted interventions addressing the reason for referral + academic interventions

Formal assessment of SEND
Transition to FE college or alternative EET

Pathway 4: Intensive Support

Commissioned AP
Based at Music Staff

Rationale: Small provisions specialism in behaviour support and engagement

Core: English, Maths, Science, Art, and Personal Development
Strong focus on Personal Development and Emotional Resilience

Interventions focused on emotional resilience, behaviour and basic skills

Formal assessment of SEND
Transition to post-16 education, employment or training

- All students study a core curriculum: GCSE English, Maths and Science and a high quality Personal Development programme
- Range of other accreditations - Functional Skills and Entry Level available
- Offer of a full GCSE (or equivalent) programme for all KS4 students to allow them to access the Level 2 threshold
- Additional GCSE (or equivalent) qualifications available dependent on the Centre or provider:
 - GCSE English Literature,
 - GCSE Art,
 - BTEC Sport and Fitness,
 - BTEC Creative Media Production,
 - GCSE Citizenship,
 - GCSE RE,
 - BTEC L1/2 Home Cooking Skills,
 - OCR National L1/2 Child Development
 - BTEC First L1/2 Award in Health and Social Care
 - NCFE Level ½ Certificate in Sport
- Students in MSPRU's core centres will have the opportunity to engage in a number of vocationally based activities as part of the Vocational Experiences Carousel. This is delivered in partnership with The Manchester College:
 - Construction
 - Hair and Beauty
 - Leisure and Tourism
 - Innovation – Design and Make
- Vocational learning available from the Manchester AP Framework for targeted students
- Students supported to return to mainstream if appropriate – significant one-off incidents; School Readiness assessment
- Students will have a formal assessment of their SEND and either transition to named setting or supported into post-16 provision
- Pathway 3 developed in conjunction with the Manchester College, students supported to progress to FE college or other EET provider
- All students supported to make an effective transition to post-16 Education, Employment or Training